



www.cpmcgsi.com



Provides Professional Consulting And Implementation Services

CONSOLIDATED PROJECT MANAGEMENT (CPM) CONSTRUCTION & GENERAL SERVICES, INC.

COMPANY PROFILE

Total Engineering Solutions

January 2023 ISSUE



GEARED TOWARDS BUSINESS EXCELLENCE...



Safety mo...



Sagot Ko!

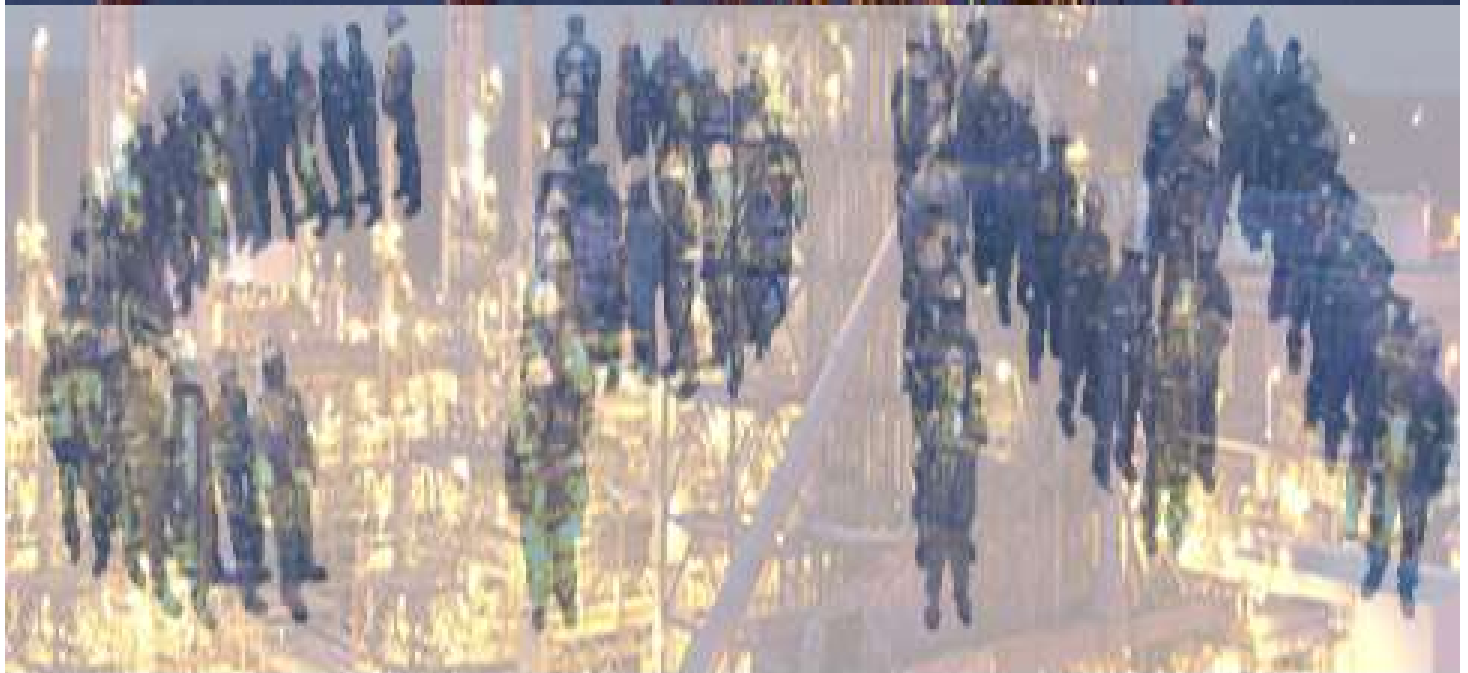
OUR VISION

To be the premiere Engineering Solutions Provider for Oil & Gas, Energy, Petrochemical and general industry sectors in the Philippines. Our strength is generated from our commitment to our clients, our people, our industry and our environment.

OUR MISSION

To exceed the expectations of our clients by offering outstanding customer service, increased flexibility, and greater value, thus optimizing system functionality and improving operational efficiency of our clients business.

Bring great value to our customers.



Commitment, Passion, Making a Difference
www.cpmcgsi.com

OUR MANTRA

START STRONG !

We always strive to start anything on a STRONG position. We plan and prepare everything that is needed and required to ensure that any project that we will take on will have a strong footing towards project success. We involve all stakeholders to ensure that their interests and needs are clarified and met which is part of good stakeholder management. We identify, stratify, and prioritize risks involved and provide measures and control to address them.

STAY STRONG !

In any project and endeavour, there will always be challenges and hurdles that we must overcome. We strive to stay strong to keep the pace when we started and we help, supplement, and complement one another to remain strong all throughout the execution phase of the project. We are open for opportunities to improve as we believe this is part of growing stronger.

FINISH STRONG !

Closing a project is as important and as challenging as starting it. A STRONG FINISH is everyone's goal and aspiration. All the learnings are taken into account as we look-back on what transpired in the project. We make sure that all loose ends are tied and stakeholders are more than satisfied to what the team has accomplished. We recognize each team member's effort and celebrate all the milestones and accomplishments of the project before sending them off for another exciting journey. We humbly accept all the observations and feedback from our clients/customers as they only mean well to us to better serve them with more value for their money.

LIVE STRONG !

We come out STRONGER THAN EVER, day after day, project after project. We apply all the experiences and learnings not only in our projects but also in each one's personal lives. We love and cherish our work. Making our customers happy makes us more than happy. This is how we LIVE STRONG!



OUR ORIGIN

CPM Construction and General Services, Inc. is a 100% Filipino owned company organized under Philippine laws and registered with the Securities and Exchange Commission on 2009.

CPM traces its origins through the merging of technical and entrepreneurial minds of its incorporators who aims to achieve and complete its goals, vision and mission for the Company and its constituents.

The Company's original target market, namely the oil and gas sector, roots from the incorporators' passion, experiences and connections not only in the oil and gas sector but also in other sectors and industries in the country who could benefit from the Company's services. This gave the opportunity for the Company to expand its services and cover design, construction and demolition services being required by our well-satisfied clients.

The Company has successfully achieved the Integrated Management System (IMS) ISO certification (ISO 9001:2015; ISO 45001:2018; ISO 14001:2015 assessed by TUV NORD last February 2020.



ISO 9001:2015



ISO 14001:2015



ISO 45001:2018



Commitment, Passion, Making a Difference
www.cpmcgsi.com

OUR TEN CORE VALUES

HSSE ASSURANCE

Our lives and quality of existence depend on it. We passionately care about safety of our people and preservation of our environment. We are committed to provide our people ways and means to work safely and prevent accidents.

PEOPLE AND COMPETENCY

Competent people is the life blood of our business. They are the most valued resources in our organization. We treat people with utmost respect and compassion and provide them training program for continuous development.

QUALITY ASSURANCE

Quality means Customer satisfaction and sustainable business.

INTEGRITY

We are honest and transparent in all our dealings. We comply with all the regulatory and statutory requirement as mandated by law.

RELIABILITY AND COMMITMENT

We are reliable and committed to deliver goods with the right specification on time and within budget.

INNOVATION AND EXCELLENCE

This is our differentiator. We continuously innovate to find new ways of working and set the bar of excellence to a new level. This will be monitored and benchmarked by our Business Excellence Department for consistency in approach and application.

SOCIAL RESPONSIBILITY

We are socially responsible. We prioritize local community on every opportunity related to our business. We always consider community on the possible impact of our operation and is committed to collaborate with them to sustain local development and preservation of environment.

STRONG PARTNER RELATIONSHIP

Strong Relationship with customers and other stakeholders is essential to understand and satisfy their needs and expectations. This enable us to continuously deliver improvements.

CUSTOMER FOCUS

We highly value our Customer by focusing and addressing their needs.

COLLABORATION AND TEAMWORK

We love to collaborate and passionately work with all stakeholders. We strongly believe that aspiring for a common goal is the best path towards achieving it.



MORE ABOUT US

CPM Construction & General Services Inc. is a Total Engineering solutions company which provides professional consulting and implementation services encompassing all aspects in the Petroleum Industry.

With its unique focus and expertise on the oil industry, clients are assured that CPM will be able to provide all Construction and Maintenance Systems they may require such as Building Design and Construct, Erection and Installation of different kind of Industrial and Petroleum Equipment, Petrol Station Construction, Fabrication and Installation of Pipelines and Mechanical equipment, plant and building demolition using mechanized demolition process as well as maintenance of our clients' valued equipment.

With a robust organization ready for deployment to any location in the Philippines, CPM is capable of attending to and managing its client's network at any time in any area.

OUR CORE VALUES

- ✓ HSSE ASSURANCE
- ✓ PEOPLE AND COMPETENCY
- ✓ QUALITY ASSURANCE
- ✓ INTEGRITY
- ✓ RELIABILITY AND COMMITMENT
- ✓ INNOVATION AND EXCELLENCE
- ✓ SOCIAL RESPONSIBILITY
- ✓ STRONG PARTNER RELATIONSHIP
- ✓ CUSTOMER FOCUS
- ✓ COLLABORATION AND TEAMWORK



Standards of Integrity In Everything We Say And Do



Commitment, Passion, Making a Difference

www.cpmcgsi.com

January 2023 ISSUE

WHY CHOOSE CPM?



At CPM Construction, we place the highest priority on the safety and health of our people and protection of our assets and the environment.

We Believe in the Strength of Our Team And We Act with Integrity

ENVIRONMENT

Conduct our business with utmost respect to our Earth and implement and sustain programs that focus on environmental protection.



Participation of TEAMS in cleaning of Barangay coastal area.



Proper Waste Handling and Storing

SAFETY

Manage Safety as a critical business activity and not compromise it under any circumstance in order to make our promise of promoting a safe and healthy culture among our people a reality. We are ready to respond in case of any emergency situations through our ERP being facilitated by our ERT.



Safety Trainings and Orientation for Supervisors and Workers



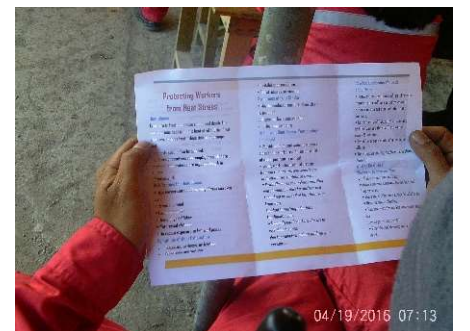
Daily Toolbox Discussion, (TSTI, Bowtie, PTW, JHA)

HEALTH

Prioritize the health of our people by ensuring that each one is fit to work both physically and mentally. We have Company Physician and Nurse who regularly provide health check-ups and monitoring. We actively employ Care for People (CfP) programs that address employee welfare and concerns.



TEAMS having their workout prior start of daily work.



Weekly General Toolbox Discussion; Topic: Protecting Workers from Heat Stress



Commitment, Passion, Making a Difference

www.cpmcgsl.com

WHY CHOOSE CPM?

WE VALUE OUR PARTNERSHIP WITH OUR STAKEHOLDERS

SOCIAL PERFORMANCE (SP) AND CORPORATE SOCIAL RESPONSIBILITY (CSR)

We prioritize local employment and provide support to the community whenever and wherever we can. We believe that our partnership with community is key factor in ensuring successful stakeholder management where everybody's concern is addressed and attended.

2020 JANUARY TAAI VOLCANO ERUPTION RELIEF OPERATIONS



January 13-16, 2020- Taal Volcano Eruption Relief Operations

Last January 12, 2020, Taal Volcano erupted which prompted the evacuation of people from nearby areas/barangays from the volcano. Many evacuees had to leave their houses and their belongings and some were only able to pack and bring few items to the evacuation centers.

CPM saw the need to help and volunteer to provide some relief on some of the evacuees and teamed-up with Philippine Red Cross to provide hot meals, groceries, toiletries, dust masks and clothings.

We understand, sympathize and empathize with our fellow Batangueños and we also thank our fellow Filipinos from other provinces and regions in extending help to those who are in need.

2021 APRIL TREE PLANTING ACTIVITY



April 18-25, 2021- Tree Planting Activity

Despite the pandemic that the world is experiencing brought by Covid-19 virus, around 50 employees of CPMCGSI took part in the individual tree planting activity as part of Company's celebration of Safety Day 2021.

This is also part of CPM's Corporate Social Responsibility (CSR) where the protection and sustainability of our environment is of prime importance to us.

Each one of us has the responsibility to save our planet.

Let us do our part to take care of our environment.



Commitment, Passion, Making a Difference

www.cpmcgsi.com

January 2023 ISSUE

WHY CHOOSE CPM?

WE VALUE OUR PARTNERSHIP WITH OUR STAKEHOLDERS

SOCIAL PERFORMANCE (SP) AND CORPORATE SOCIAL RESPONSIBILITY (CSR)

2022 SEPTEMBER COASTAL CLEANUP AT SHIFT JETTY SHORELINE



September 10, 2022, Saturday-CPMCGSI CSR-Coastal Clean-up Activity

Last September 5, 2022, the Management instructed CSR Team to prepare and arrange a coastal clean-up activity at SHIFT Jetty Approach shoreline in preparation for an incoming visitor the following week.

CPM took this as an opportunity to hold and observe the International Coastal Clean-up Day (being celebrated on September 17, 2022).

2022 SEPTEMBER 23 PSFI TAB APLAYA COASTAL CLEANUP



September 23, 2022, Friday-PSFI Tabangao Aplaya-Coastal Clean-up Activity

Last September 23, 2022, 5 CPM representatives participated in Pilipinas Shell Foundation Inc. (PSFI) Coastal Clean-up Activity at Tabangao Aplaya, Batangas City.

Representatives from AHSSEP SHIFT Committee, Inc. were seen also joining hand in hand in helping the coastal areas at Tabangao Aplaya be cleaner than before.

City ENRO also came and gave the opening remarks prior the start of clean-up. LGU waste collection team also came after the clean-up to collect the segregated wastes collected which were weighed prior to hauling.



Commitment, Passion, Making a Difference

www.cpmcgsi.com

January 2023 ISSUE

WHY CHOOSE CPM?

WE VALUE OUR PARTNERSHIP WITH OUR STAKEHOLDERS

SOCIAL PERFORMANCE (SP) AND CORPORATE SOCIAL RESPONSIBILITY (CSR)

2022 NOVEMBER 09 PSFI-SHIFT TAB APLAYA COASTAL CLEAN-UP



November 09, 2022, Wednesday-PSFI -SHIFT Tabangao Aplaya-Coastal Clean-up Activity

Last November 09, 2022, 12 representatives from CPM participated in Pilipinas Shell Foundation Inc. (PSFI) and Shell Import Facility Terminal (SHIFT) for the Coastal Clean-up Activity at Tabangao Aplaya, Batangas City.

The clean-up started 6:30 AM and ended until 9:30 AM. The shoreline in the area was refreshed and cleaned thoroughly.

Thanks for the wonderful volunteers who gave their time and did their part in cleaning and taking care of the environment!



Commitment, Passion, Making a Difference

www.cpmcgsi.com

January 2023 ISSUE

WHY CHOOSE CPM?

WE VALUE OUR PARTNERSHIP WITH OUR STAKEHOLDERS

SOCIAL PERFORMANCE (SP) AND CORPORATE SOCIAL RESPONSIBILITY (CSR)

2022 DECEMBER 10 CHRISTMAS GIFT GIVING



December 10, 2022, Saturday-Christmas Gift Giving

It's the most wonderful time of the year!

CPM joins the community in celebrating the spirit of Christmas -- to share, to give, to love and to bless other peoples' lives especially the nearby community that CPM operates on.

Sharing blessings that we receive is part of our commitment to our community.



Mr. Edward Seno, CPM's Business Development and Program Integration Manager, gave an inspirational opening message before proceeding with the gift giving.

Even though there is a low pressure area and intermittent drizzle rain at the time of giving, about 80 families were blessed and received grocery items as Christmas presents!



Commitment, Passion, Making a Difference

www.cpmcgsi.com

January 2023 ISSUE

WHY CHOOSE CPM?

WE VALUE OUR PARTNERSHIP WITH OUR STAKEHOLDERS

2022 FOURTH QUARTER COASTAL CLEAN-UP AT SHIFT JETTY SHORELINE



December 16, 2022, Friday - SHIFT Jetty Shoreline - Quarterly Coastal Clean-up Activity

We are back!

CPM has committed to go back every 3 months to collect non-biodegradable solid wastes from SHIFT Jetty Shoreline. This is our commitment to our client, the environment and the community.

The team had collected about 20 sacks of non-biodegradable wastes. The team had observed frequent wastes such as slippers, lighters, styrophors, plastic bottles, nylon ropes.

Tacad river and delta and nearby areas are usual upstream sources of solid waste that are washed ashore at SHIFT jetty shoreline when there are flood or typhoons.

Besides the quarterly CSR Coastal Clean-up activity, another team from CPM conducts at least 30 minutes daily to pick-up non-biodegradable wastes to reduce the piling-up of solid wastes.

Amazingly, somehow nature helps itself in cleaning by washing ashore the wastes generated by humans and somehow we are happy to help and contribute in the solid waste management to promote welfare to the environment.



Commitment, Passion, Making a Difference

www.cpmcgsi.com

WHY CHOOSE CPM?

WE INNOVATE



CPMCGSI special fabricated tool for inner pipe cold cutting method. Special tool has been used one time to cut a jet nozzle mixer inside the tank where access is impossible and where cold cutting is required for safe cutting/demolition. Jet mixer nozzle was allowed to be left inside the tank though.

LIVING TRUE TO OUR COMMITMENT: CPM AS ENGINEERING SOLUTIONS PROVIDER

CPM does not stop until it reaches an effective and safe solution for its clients. We do not dwell on conventional methods when we hit a wall. We climb or jump the wall and ensure that we deliver to meet or exceed our client's expectations.

HydroVac Excavation Venturi Excavation Prototype

Water Jetting of soil until slurry is produced, while simultaneously being vacuumed by Venturi Excavation Prototype. Water Jetting uses only 1,000psi to not damage utilities.



SAFETY & PRODUCTIVITY

We ensure that we put SAFETY the highest premium while observing ALARP. The hydrovac excavation is not new to the industry but a first to the location we are operating on. The safety benefits of this method along with a reasonable productivity rate makes this method attractive compared to the conventional pilot trenching methods where underground utilities need to be day-lighted. No amount of cost is too high when it comes to safety. Contact us to know more about this method.



Commitment, Passion, Making a Difference
www.cpmcgsi.com

WHY CHOOSE CPM?

WE EXCEL

2021-GN POWER-CONTRACTOR OF THE YEAR



CPM Construction and General Services, Inc.-North Luzon Operations had the honor of receiving the award of "Contractor of the Year" from one of its major client in the area where both HSSE and Quality aspects had been the criteria for selection.

Kudos to our North Luzon Operations Team!

Continue our road to excellence...

2021-SHIFT-CONTRACTOR OF THE YEAR



CPM Construction and General Services, Inc.-South Luzon received three major awards from Shell Import Facility Terminal (SHIFT) last December 2021.

- Best Contractor Company - Projects**
- Best Safety Officer - Engr. Rose Marie Mayuga, HSSE Lead and PCO**
- Model Worker-SHIFT Idol - Mr. Jerwin Mendoza - Mechanical Foreman**

CPM has become stronger than ever and is living its mantra for all its projects to always

"START STRONG, STAY STRONG, FINISH STRONG!"



Commitment, Passion, Making a Difference

www.cpmcgsi.com

January 2023 ISSUE

WHY CHOOSE CPM?

WE EXCEL

2022 MAY AWARDING - SHIFT-BBS GRAND PRIX 1ST RECIPIENT-APRIL 2022 PERIOD



*CPM Construction and General Services, Inc.-South Luzon Operations became the **FIRST RECIPIENT** of SHIFT BBS Grand Prix which assessment started on the month of April 2022 and retention of trophy and flag award on the month of May 2022.*

The perpetual trophy as well as the flag were received by Mr. Edward Seno, Business Development and Integration Manager and Mr. Ronnie Austria, Special Projects Manager at PSPC Talaba Court last May 18, 2022.

To our clients and partners, rest assured that CPM Team will always strive to be a frontrunner!

We are geared towards business excellence!



Commitment, Passion, Making a Difference

www.cpmcgsi.com

January 2023 ISSUE

WHY CHOOSE CPM?

WE EXCEL

2022 AUGUST CONTRACTORS MEETING PSPC T&S' SAFETY RECOGNITION AWARD TO CPMCGSI ALONG WITH OTHER T&S CONTRACTORS



CPM Construction and General Services, Inc. is proud to be one of the recipients of PSPC T&S' Safety Recognition for CPM's contribution along with the other T&S EPCC Contractors who attended the August 2022 Contractors' Meeting.

The meeting was attended by CPM's President, Mr. Roberto Gabriel (received the certificate), Mr. Jun Pataleta, Jr. (CPM ARMD Manager) and Engr. Jainerisa Caber, EPCC Integration Lead Engineer.

CPM is honored to be selected to be one of the EPCC (Engineering, Procurement, Construction, Commissioning) Contractors for T&S.

Receiving such recognition gives the team a morale boost to continue pursuing and aligning with its clients' business principles and value drivers which leads to business excellence.

Congratulations to the whole team and continue striving for excellence!



Commitment, Passion, Making a Difference

www.cpmcgsi.com

January 2023 ISSUE

WHY CHOOSE CPM?

WE EXCEL

2022 SEPTEMBER - DISTRIBUTION OPERATION LEADERSHIP TEAM MEETING AND RECOGNITION DAY WITH SHIFT CONTRACTORS



Last September 14, 2022, representatives from CPMCGSI, Mr. Roberto Gabriel, President, Mr. Edward Seno, Business Development and Program Integration Manager, and Mr. Ronnie Austria, Special Projects Manager attended the Distribution Operation Leadership Team meeting at SHIFT Taclobo House at Tabangao, Batangas City.

The team did the honor of receiving the Certificate of Appreciation from Shell for being the new Engineering Maintenance and Tank Maintenance contractor for SHIFT.

The event was attended also by representatives from other contractors at SHIFT.

CPM Team is grateful not only to Shell but also to all our partners and stakeholders that help us provide services to our clients.



Commitment, Passion, Making a Difference

www.cpmcgsi.com

January 2023 ISSUE

WHY CHOOSE CPM?

WE EXCEL

2022 GN POWER SAFETY CONTRACTOR OF THE YEAR

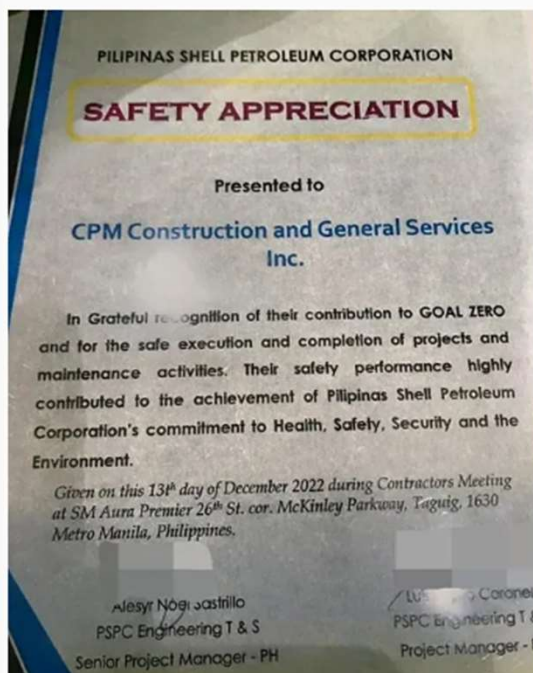


CPM North Luzon Operations has once again bagged the Safety Contractor of the Year awarded by GN Power!

We are proud of you team and we hope you continue our continuous good track record in safety performance as well as delivering services beyond satisfaction to our clients!

We are ONE CPM!

2022 DECEMBER PSPC SAFETY APPRECIATION DURING CONTRACTORS MEETING



CPMCGSI is honoured to receive safety appreciation from PSPC T&S during the Contractors' Meeting held at SM Aura Premier last December 13, 2022.

The meeting was attended by Corporate HSE Manager, Mr. Cesar Etruiste and Engr. Jainerisa Caber, EPCC Integration Lead Engineer.

Nice work CPM!



Commitment, Passion, Making a Difference

www.cpmcgsi.com

January 2023 ISSUE

OUR PEOPLE



A Strong Team Is Fundamental To Our Continued Success

We are committed to the recruitment and development of the best individuals in the industry.

We provide our people the opportunity to grow with the success of the company.

We expect that the people of CPM Construction Inc. will be known for being fair, honest, courteous and professional.



Commitment, Passion, Making a Difference

www.cpmcgsi.com

OUR EXPERIENCE IN THE BUSINESS



Green Field Services: Engineering Construction and Subcontracting Services

- Fuel Refilling Stations
- Bund Wall / Retaining Wall
- Industrial and Commercial Buildings
- Temporary Site Facilities
- Material Off-Loading Facility
- Site Development
- Road and Bridges
- Transmission Lines
- Communication Towers
- Railways
- Technical and Clerical Support
- Civil scope: Site development, Foundation and other related works, Structural Fabrication and erection
- Mechanical: Equipment installation and inspection, Piping fabrication and installations, Testing/pre-commissioning and Start-up
- Electrical/Instrumental: Cable trenching/laying, testing and termination, System checks

Brown Field Services: Preventive Maintenance, Civil, Electrical and Mechanical Services

- Tank Erection/Tank repair/Tank Cleaning and Inspection
- Pipe Works (Fabrication, Installation, Testing and Tie-in)
- HVAC Installation and Maintenance
- Fire Protection
- Electrical and Instrument Installation and Maintenance
- UST Installation and Pull-out
- Pump Installation and Maintenance
- Plant Demolition and Dismantling works
- Plant Maintenance (**TEAMS-Total Engineering Asset Management**) and Brownfield Construction-Planning and Execution.
- Plant Shutdown-Planning and Execution.

- Industrial Rotating Equipment
- Industrial Stationary Equipment
- Facilities Management
- Fuel Retail Station Maintenance
- Motor Pool
- Demolition Works- Partial/Total Knock-down

Allied Services

- Crude Oil, Diesel, Unleaded Fuel, Leaded Fuel, Liquefied Petroleum Gas hauling
- Land Transport provision for all SPEX Employees
- Trading and Supply
- Equipment rental

CPM INNOVATIONS:

- Hydroexcavation Venturi excavation prototype
- Inner pipe cold cutting tool

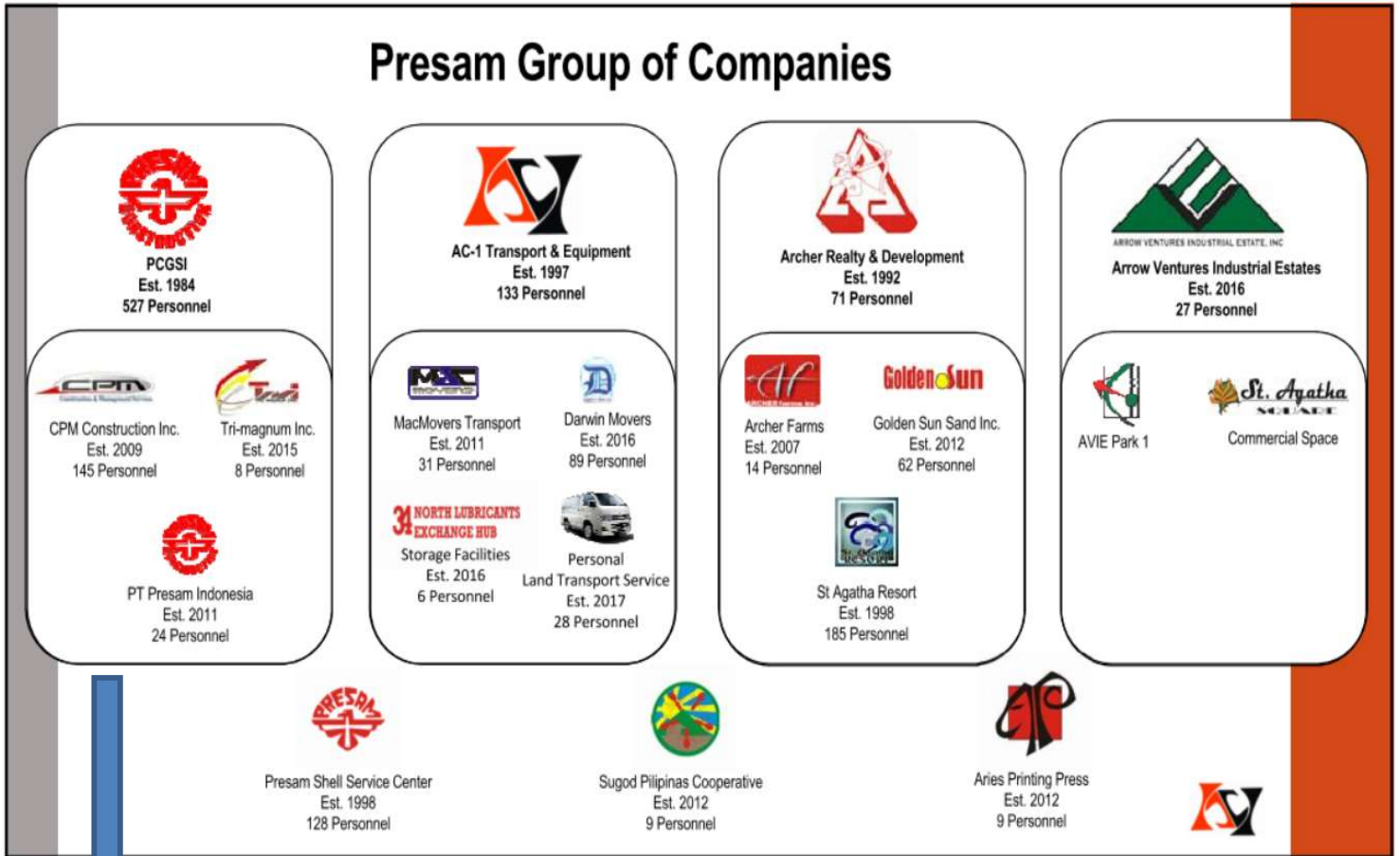


Commitment, Passion, Making a Difference

www.cpmcgsi.com

OUR GROUP

Presam Group of Companies



**CONSTRUCTION,
TRADING & SUPPLY
& GENERAL SERVICES
DIVISION**



PRESAM GROUP



**OIL & GAS DOWNSTREAM SERVICES
SPECIFIC TO DISTRIBUTION /
MOBILITY, RETAIL CONSTRUCTION &
MAINTENANCE**



**ENERGY, PETROCHEMICAL, OIL & GAS
(UPSTREAM & DOWNSTREAM) SERVICES, I.E.
MANUFACTURING DISTRIBUTION, RETAIL
CONSTRUCTION & MAINTENANCE**



**TRADING & SUPPLY,
LICENSED IMPORTER**



Commitment, Passion, Making a Difference

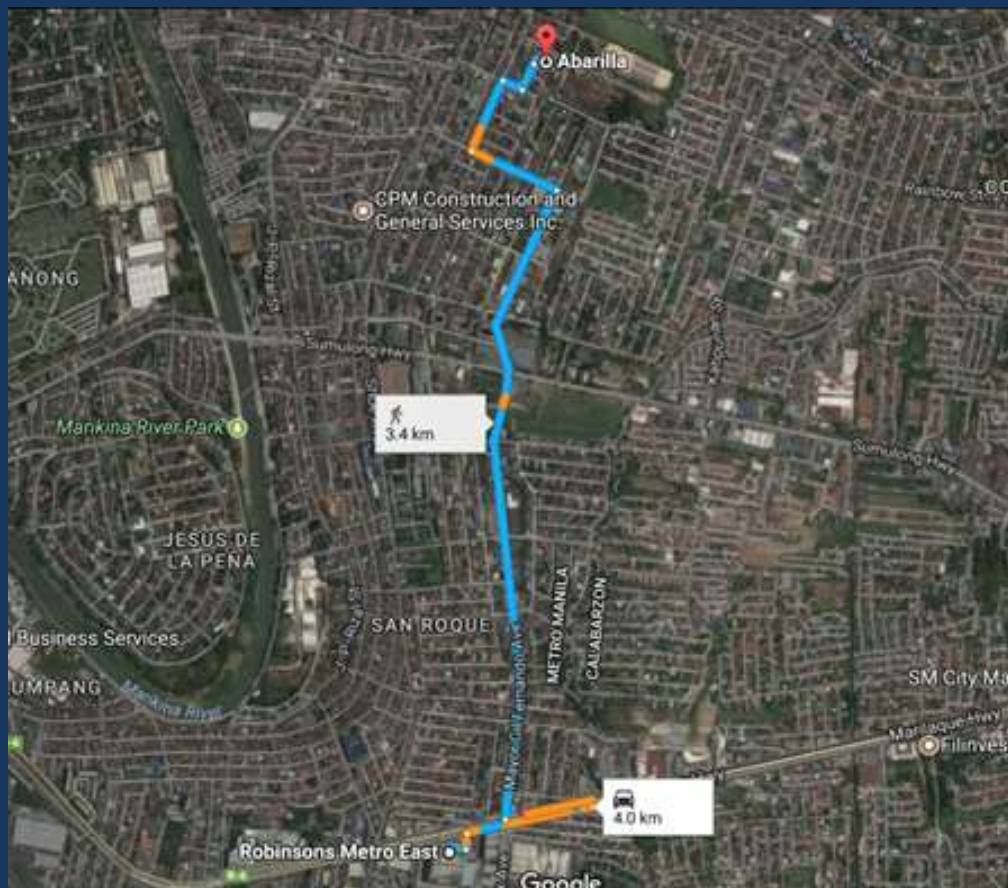
www.cpmcgsi.com

OUR ASSETS AND FACILITIES

CPM Construction and General Services, Inc. Main office is located at # 54 Abarilla St. Concepcion Uno, Marikina City. The facility compound is composed of offices for work stations, area for motor pool garage and maintenance, staff and personnel accommodations, conference room, and training room.

LOCATION MAP:

CPM METRO OFFICE-#54 ABARILLA ST, CONCEPCION UNO, MARIKINA CITY. METRO MANILA



CPM METRO OFFICE



Commitment, Passion, Making a Difference

www.cpmcgsi.com

OUR ASSETS AND FACILITIES

CPM-METRO-WORK STATIONS



CPM METRO-TRAINING AND CONFERENCE ROOMS



CPM METRO-MOTOR POOL GARAGE AND ACCOMMODATIONS



Commitment, Passion, Making a Difference

www.cpmcgsi.com

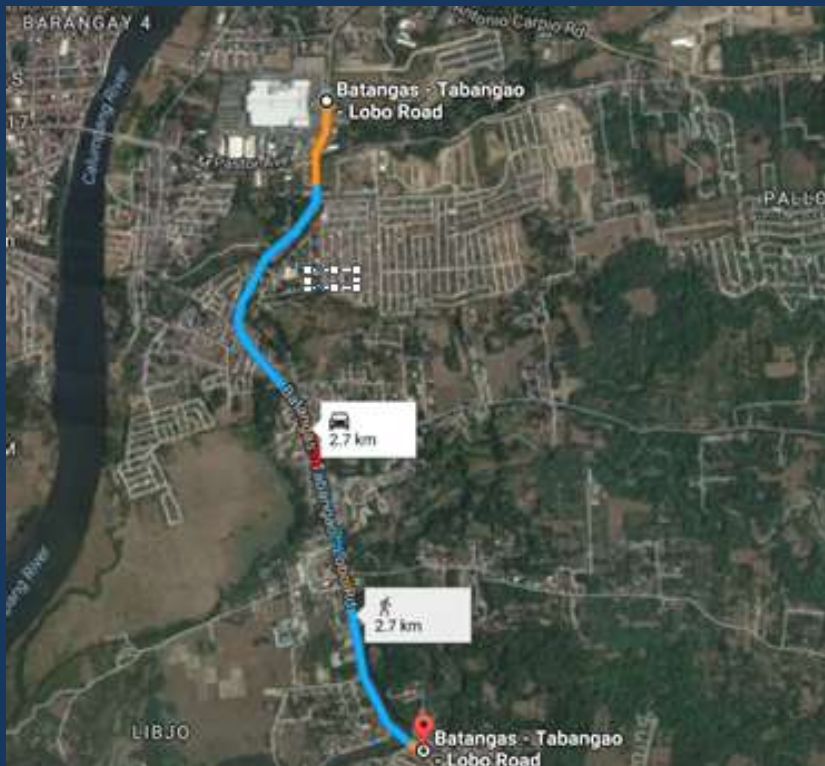
January 2023 ISSUE

OUR ASSETS AND FACILITIES

CPM South Luzon Base is located at Brgy. San Isidro, Batangas City with 2 extension offices at Sitio Gitna and Sitio Silangan I of the same barangay. CPM South Luzon Building-Extension Office is near Takad Bridge, situated at Sitio Gitna, San Isidro, Batangas City. It is a 2-storey building equipped with 2 conference rooms and 2 large offices that accommodates the administration, finance, engineering, construction, and HSSE departments of the company. Land area of the compound is about 2,000 sq.m. that is suitable for heavy equipment parking for 40ft length equipment, setting-up of temporary fabrication as well as laydown area.

LOCATION MAP:

CPM SOUTH LUZON-EXTENSION OFFICE-SITIO GITNA, BRGY. SAN ISIDRO, BATANGAS CITY



CPM South Luzon Base is equipped with base radio and repeater which could clearly reach and establish communication at approximately 15km radius from the San Isidro Office. This makes logistics and communication between staff and personnel easier within Batangas City using radios.

CPM SOUTH LUZON BUILDING EXTENSION OFFICE

This facility is being used where there are Projects needing additional separate Project Management Team.

When this is not in use, this facility could act as Isolation Facility intended for CPM employees who might contract infectious diseases needing isolation/quarantine, e.g. COVID 19.



Commitment, Passion, Making a Difference

www.cpmcgsi.com

January 2023 ISSUE

OUR ASSETS AND FACILITIES

CPM SOUTH LUZON-EXTENSION OFFICEWORK STATIONS



CPM SOUTH LUZON-CONFERENCE ROOM

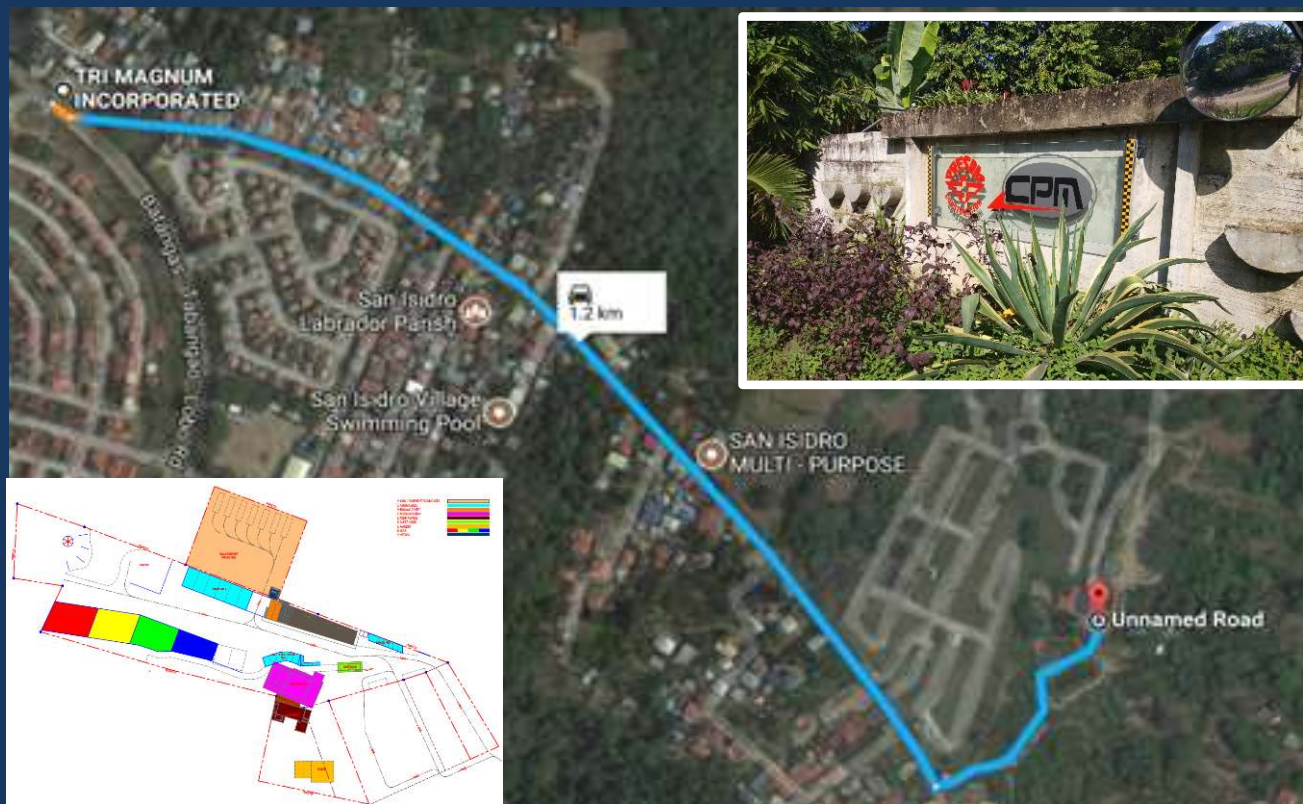


OUR ASSETS AND FACILITIES

Fabrication, Accommodations, Resources and Maintenance (FARM) is located at Sitio Silangan I, San Isidro, Batangas City, about 1.2km from CPM South Luzon Extension Office at Sitio Gitna. The approximate area of the compound is 1 hectare. Offices for administration, human resource, engineering, accounting and finance are located at FARM.

LOCATION MAP:

CPM SOUTH LUZON-FABRICATION, ACCOMODATIONS, RECOURCES, MAINTENANCE (FARM)-SITIO SILANGAN I, BRGY. SAN ISDIRO, BATANGAS CITY



CPM SOUTH LUZON-FARM OFFICE



Commitment, Passion, Making a Difference
www.cpmcgsi.com

OUR ASSETS AND FACILITIES

CPM SOUTH LUZON-FARM OFFICE FACILITIES:



WORK STATIONS



ACCOUNTING AND FINANCE OFFICE

ARCHIVE ROOM



Commitment, Passion, Making a Difference

www.cpmcgsi.com

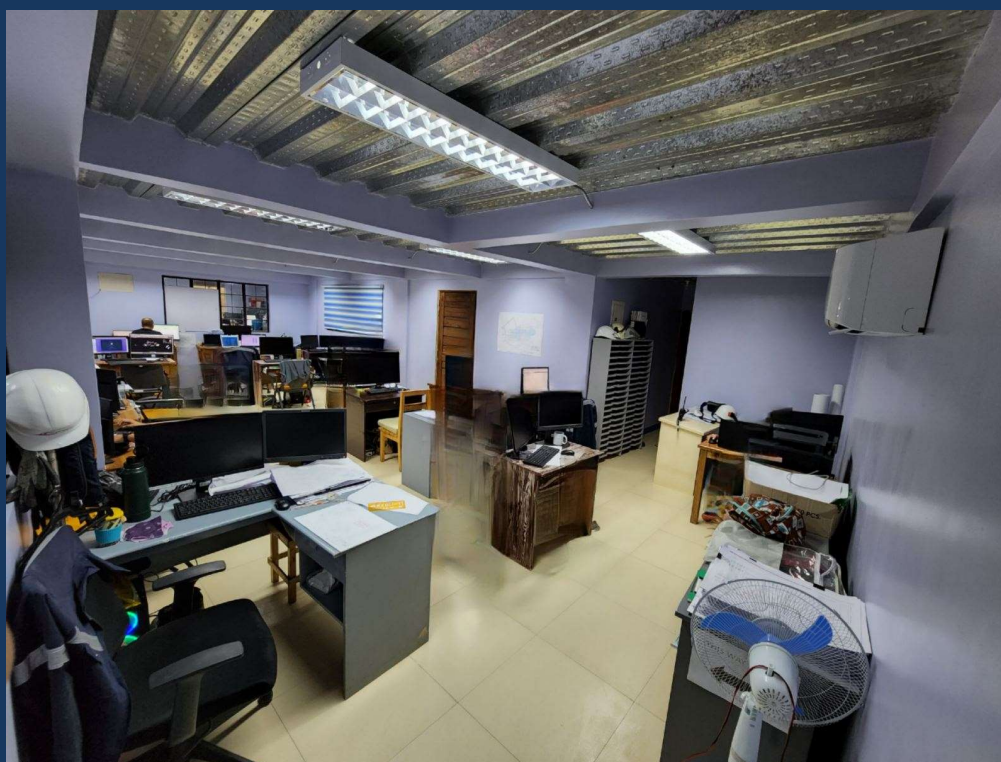
January 2023 ISSUE

OUR ASSETS AND FACILITIES

CPM SOUTH LUZON-FARM OFFICE FACILITIES:



ENGINEERING CONFERENCE ROOM (up to 20 pax)



ENGINEERING, PROJECT CONTROL
& MANAGEMENT DEPARTMENT



Commitment, Passion, Making a Difference
www.cpmcgsi.com

OUR ASSETS AND FACILITIES

CPM SOUTH LUZON-FARM OFFICE FACILITIES:

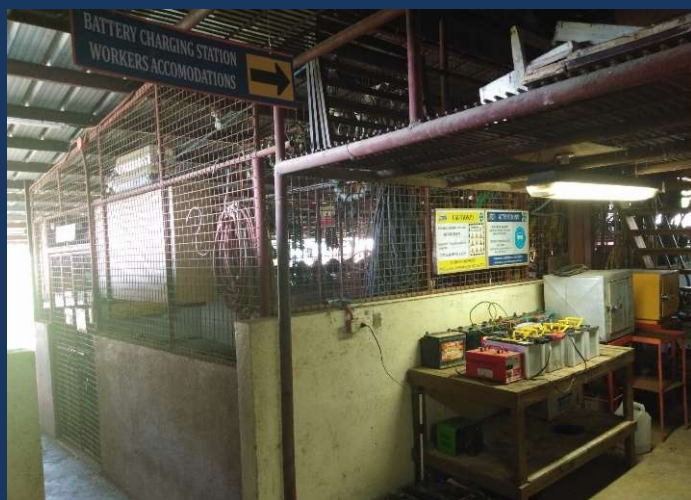
SPECIAL PROJECTS OFFICE



MOTORPOOL



BATTERY CHARGING STATION



MECHANICAL, ELECTRICAL,
INSTRUMENT WORKSHOP



DOCUMENT &
RECORDS SECTION



LAMINATING,
PUNCHING, CUTTING,
SHREDDING STATION



Commitment, Passion, Making a Difference

www.cpmcgsi.com

January 2023 ISSUE

OUR ASSETS AND FACILITIES

CPM SOUTH LUZON-FARM OFFICE FACILITIES:



MESS HALLS



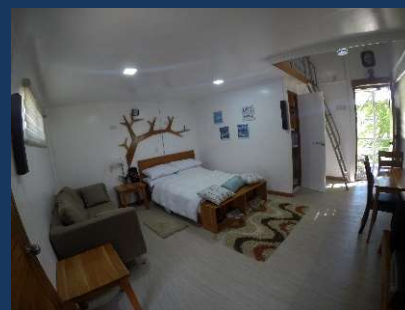
WORKERS ACCOMMODATIONS



ENGINEERS AND SUPERVISORS ACCOMMODATIONS



GUESTS ACCOMMODATIONS



OUR ASSETS AND FACILITIES

CPM SOUTH LUZON-FARM OFFICE FACILITIES:
LAYDOWN AREA AND EQUIPMENT PARKING AREA



WAREHOUSE AND TOOLS ROOMS



PAVILLION – TRAINING AND CONFERENCE AREA



Commitment, Passion, Making a Difference
www.cpmcgsi.com

OUR ASSETS AND FACILITIES

CPM SOUTH LUZON-FARM OFFICE FACILITIES:



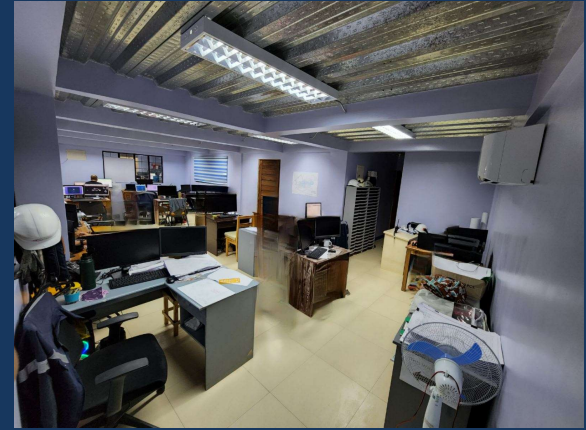
NEW FABRICATION AND TRAINING CENTER



STAFF PARKING AREA



MOTOR POOL AREA



ENGINEERING, PROJECT CONTROL & MANAGEMENT DEPARTMENT



MACHINING AREA



CARPENTRY AREA



OUR ASSETS AND FACILITIES

CPM SOUTH LUZON-FARM OFFICE FACILITIES:



LAYDOWN AREA AND EQUIPMENT PARKING AREA



STAFF AND VISITORS PARKING AREA



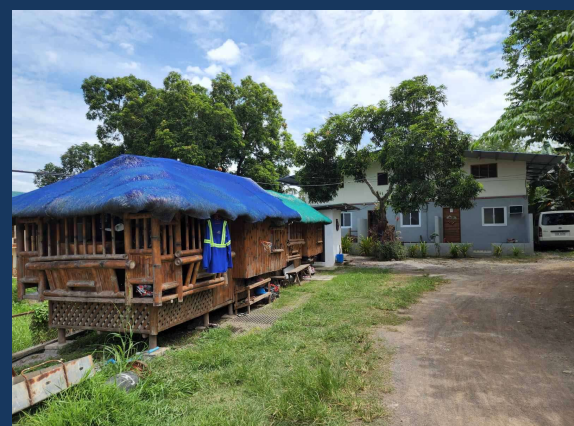
STAFF AND VISITORS PARKING AREA



ENGINEERS AND SUPERVISORS ACCOMMODATIONS



ENGINEERS AND SUPERVISORS ACCOMMODATIONS



ENGINEERS AND SUPERVISORS ACCOMMODATIONS



Commitment, Passion, Making a Difference

www.cpmcgsl.com

January 2023 ISSUE

OUR HEAVY EQUIPMENT **FLEET**



HITACHI 350LCK, WITH GENESIS 255 SHEARER/22METER LONG ARM



EXCAVATOR VOLVO EC210 with BUCKET / BREAKER / GRAPPLER ATTACHMENTS



PAYLOADER, SDLG, LG936L



ROAD ROLLER, SAKAI TW41, 4TR



DOZERS, KOMATSU D6



GULLY SUCKER (being used for hydro excavation)



Commitment, Passion, Making a Difference

www.cpmcgsi.com

HEAVY EQUIPMENT FLEET



DUMP TRUCK, ISUZU, 18 cu.m



DUMP TRUCK, MINI, ISUZU, 10 cu.m



FORKLIFT, 4T



BOOM TRUCK,, 10T



MANLIFT, ISUZU, 14 REACH



SANY STC 500 CRANE, 50TR



BOOM TRUCK, , 3TR

Working height: 125 feet or 38 meters
Platform height: 119 feet or 36.2 meters
Maximum capacity on bucket: 1,500 pounds or 681 kgs



CONDOR MANLIFT-38M REACH



Commitment, Passion, Making a Difference

www.cpmcgsi.com

January 2023 ISSUE

LIGHT EQUIPMENT



AIR COMPRESSOR,
AIRMAN 125 CFM



CONCRETE VIBRATOR



PNEUMATIC
JACKHAMMER, HILTI



MIXER, 1 BAGGER



WALK BEHIND
COMPACTOR, 1TR



WELD MASTER, BENCH
ELECTRODE OVEN



GENSET, CATERPILLAR, 230kVA



MOBILE GENSET, 10kVA



GENSET, 55kVA



AIR COMPRESSOR, AIRMAN 290 CFM



AIR COMPRESSOR, AIRMAN 290 CFM



100 KVA Cummins Genset



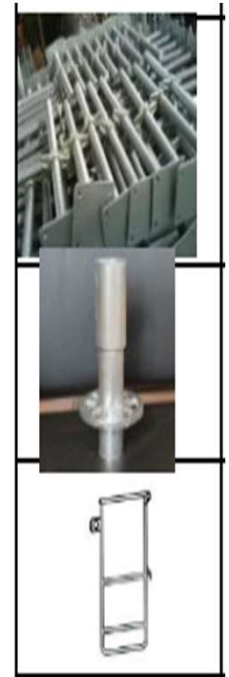
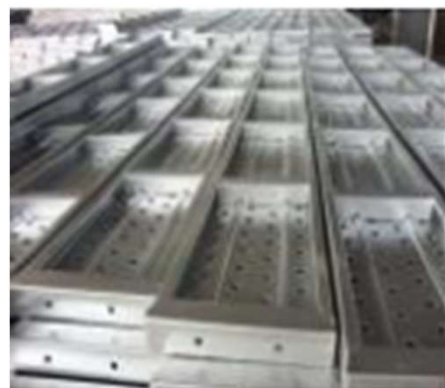
PNEUMATIC SAW, FEIN



Commitment, Passion, Making a Difference

www.cpmcgsi.com

COMPLETE SCAFFOLDING MATERIALS



Commitment, Passion, Making a Difference

www.cpmcgsi.com

OUR CLIENTS/ PARTNERS



GNPower Mariveles Coal Plant Ltd. Co.



Commitment, Passion, Making a Difference
www.cpmcgsi.com

PROJECTS & ACCOMPLISHMENTS



Demonstrating International Mindedness



Subcontracting Demolition and Disposal of LPG assets which includes:

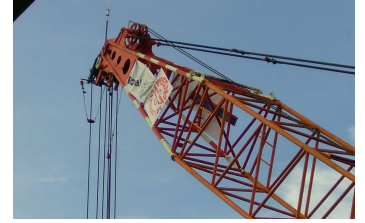
- LPG Tanks including lines to and from the tanks to the pipe rack including pipe rack.
- Ammonia Recovery Unit (ARU) Process area including foundation to grade
- Flare Structure and header
- Piping above ground and water
- Marine receiving and loading arms (5 units)
- Other miscellaneous structural items such warehouse, waste materials and underground cables and pipes.



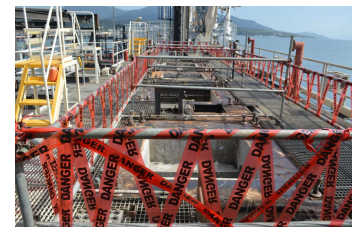
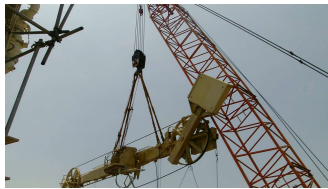
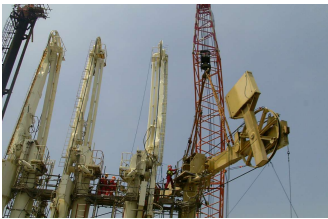
Commitment, Passion, Making a Difference

www.cpmcgsi.com

PROJECTS & ACCOMPLISHMENTS



PARTNERSHIP BETWEEN PRESAM-CPM & ROYAL CARGO DURING THE REMOVAL OF 5 LOADING ARMS AND APPURTENANCES AT JETTY.



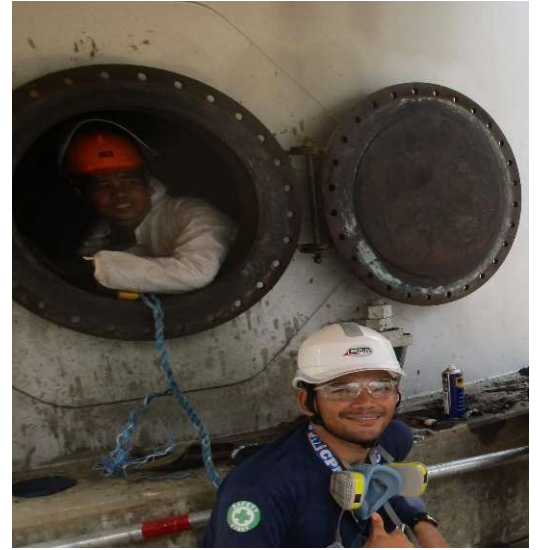
Commitment, Passion, Making a Difference

www.cpmcgsi.com

PROJECTS & ACCOMPLISHMENTS



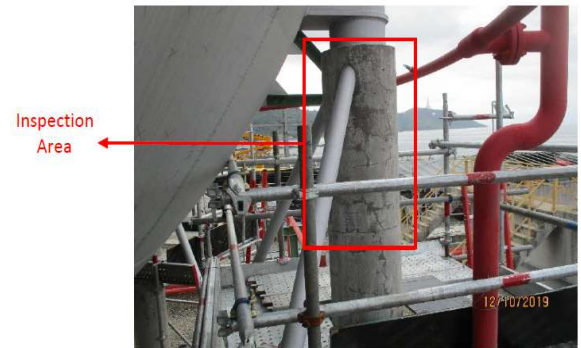
Maintenance and Inspection during OSBL-TAM at JG Summit



Tank cleaning & inspection



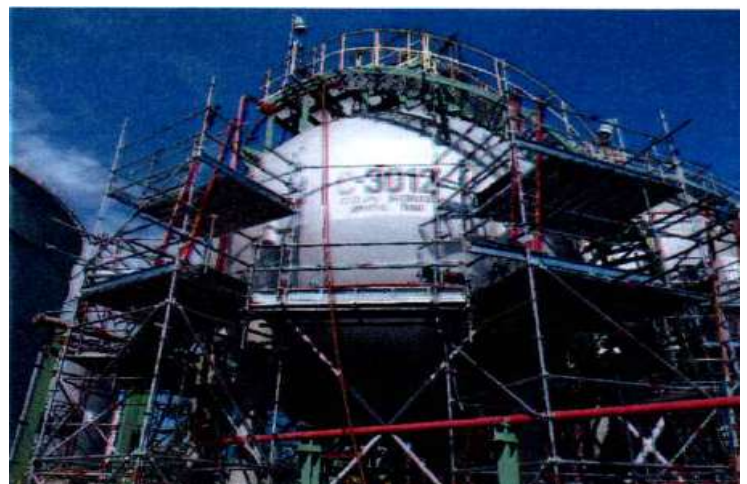
CPM & JG Summit team during OSBL-TAM



PEC inspection of Sphere



Tank cleaning & inspection



Scaffolding Erection for Inspection



Commitment, Passion, Making a Difference

www.cpmcgsci.com

PROJECTS & ACCOMPLISHMENTS



Project Management Support to ALE's Heavy Lift & Transport Project for JG Summit Expansion in Batangas



Complete Assembly of 1,350T Crane at the site, One of the biggest cranes brought in the Philippines



Tandem Lifting of Column weighing 480T and 85 meters high



Commitment, Passion, Making a Difference

www.cpmcgsi.com

January 2023 ISSUE

PROJECTS & ACCOMPLISHMENTS



Project Management Support to ALE's Heavy Lift & Transport Project for JG Summit Expansion in Batangas



Loading of Column to SPMT



SPMT rolling to Lifting area



Commitment, Passion, Making a Difference

www.cpmcgsi.com

January 2023 ISSUE

PROJECTS & ACCOMPLISHMENTS



PROJECT NAME
Supplementary PR for LPG & BOG SD Activities (From June 30 - August 31, 2021)
Assistance to BDEU operations' Commissioning (September)
AEU Commissioning Support (June 12, 2021 - August 31, 2021)
Supply of materials and fabrication of Support Reinforcement for V-5814- PE2 Ref. Unit
Extension of 5031001581 - ADDITIONAL WORKS TO BE INCLUDED ROLLOUP DOORS @ PKG 2 & 4
Supply of Manpower / Tools (GEMCO)
Transfer and Installation of Various Machine Shop Equipment in the New MED Building
Fabrication of Hopper for Fluff Charging of PE3
Addendum to PR#1231002240 - Assistance to BDEU operations' Commissioning (October)
Addendum to PR#1232001303 - Assistance to BDEU operations' commissioning (November)
Construction of Male CR at FGW3
Installation of Panic Devices in FGW1
Platform Modification for EW 3499 - Additional Carbon Canister for Thox
PE2 Shutdown: Conveying line elbow replacement
Repair of Roll up Doors (Product Warehouse - FG1)- Inspection
Repair of roll up doors at FGW1 (Repair)



Commitment, Passion, Making a Difference

www.cpmcgsi.com

January 2023 ISSUE

PROJECTS & ACCOMPLISHMENTS

PAINTING OF FLY ASH SILOS A & B - CONCRETE TANKS (28 METERS), STRUCTURAL ACCESS STAIRWELL AND APPURTENANCES



The Company with a TEAM who loves CHALLENGES NO MATTER HOW BIG.

GNPower Mariveles Coal Plant Ltd. Co.



Commitment, Passion, Making a Difference

www.cpmcgsl.com

PROJECTS & ACCOMPLISHMENTS

GNPower Mariveles Coal Plant Ltd. Co.

CONCRETING OF COAL YARD A & B



PERIMETER LIGHTING POST INSTALLATION



Commitment, Passion, Making a Difference

www.cpmcgsi.com

January 2023 ISSUE

PROJECTS & ACCOMPLISHMENTS



T E A M S

Engineering, Procurement, Construct and Maintenance contract with OILINK 150M liters fuel depot @ Brgy. Lucanin, Mariveles, Bataan since 2013 with the following objectives:

- A. Save cost from existing admin set-up
- B. Flexibility in the proposed PM
- C. Efficient retail operation
- D. Reliable maintenance and project outcome
- E. Target ZERO
- F. On-call Service department
- G. Fixed Rate Maintenance

Total Engineering Asset Management System

COMPETENCY OF OUR PEOPLE **IS ASSURED**. THE RANGE & CAPABILITIES OF OUR **TEAMS** WORKFORCE ARE SPREAD TO **CIVIL, MECHANICAL, ELECTRICAL, INDUSTRIAL INSTRUMENTATION, PLANT OPERATION & MAINTENANCE** AS WELL AS RESPONDING TO **EMERGENCY SITUATIONS**.



Pump inspection prior pull out for maintenance.

COMPLETED PROJECTS		
Project	Location	Work Description
Total Scope Maintenance	Bataan Depot	Preventive Maintenance of Bataan Depot
Adhoc Projects	Bataan Depot	Implementation of approved adhoc works
Bataan Depot	Bataan Depot	Ethanol pipeline sectional replacement
Bataan Depot	Bataan Depot	Installation of filling lines
Bataan Depot	Bataan Depot	Construction of perimeter wall
Bataan Depot	Bataan Depot	Installation of pipe support in causeway
Bataan Depot	Bataan Depot	Installation of new filling line



Fabrication of rebar's at fabrication shop for the construction of depot perimeter wall.



Construction of the Depot Perimeter Wall.

Changing of Marine Hose gasket prior transferring and installation at Jetty Area in preparation for fuel receiving.



Commitment, Passion, Making a Difference

www.cpmcgsi.com

PROJECTS & ACCOMPLISHMENTS



T E A M S

Engineering, Procurement, Construct and Maintenance contract with OILINK 150M liters fuel depot @ Brgy. Lucanin, Mariveles, Bataan since 2013 with the following objectives:

- A. Save cost from existing admin set-up
- B. Flexibility in the proposed PM
- C. Efficient retail operation
- D. Reliable maintenance and project outcome
- E. Target ZERO
- F. On-call Service department
- G. Fixed Rate Maintenance

Total Engineering Asset Management System

COMPETENCY OF OUR PEOPLE **IS ASSURED**. THE RANGE & CAPABILITIES OF OUR **TEAMS** WORKFORCE ARE SPREAD TO **CIVIL, MECHANICAL, ELECTRICAL, INDUSTRIAL INSTRUMENTATION, PLANT OPERATION & MAINTENANCE** AS WELL AS RESPONDING TO **EMERGENCY SITUATIONS**.



Commitment, Passion, Making a Difference

www.cpmcgsi.com

January 2023 ISSUE

PROJECTS & ACCOMPLISHMENTS

OILINK PROJECTS



CONSTRUCTION OF OIL & WATER SEPARATOR



ACCESS PLATFORM CONSTRUCTION



FENCING AT LORRY PARKING AREA



CONSTRUCTION OF POST LOADING AREA.



ELECTRICAL PROJECTS



PIPING PROJECTS



Commitment, Passion, Making a Difference

www.cpmcgsi.com

PROJECTS & ACCOMPLISHMENTS

SEOIL PHILIPPINES, INC.

Project	Location	Work Description
Seaoil - Total Scope Maintenance	Various sites Mindanao Wide	Preventive Maintenance of Caltex Stations Mindanao Wide
Adhoc Projects	Mindanao Wide	Implementation of approved adhoc works
Malalag Depot	Malalag, Davao	Installation of concrete base, pipelines
NTI – Trento	Agusan del Sur	Construction of gasoline station
NTI – San Rafael	San Rafael, Bulacan	Construction of gasoline station
NTI – Cabadbaran	Agusan del Norte	Construction of gasoline station
NTI – Matalam	North Cotabato	Construction of gasoline station
NTI – Makilala	North Cotabato	Construction of gasoline station
NTI – Marbel	Marbel, Koronadal	Construction of gasoline station
NTI – Bonifacio	Bonifacio, Tagum	Construction of gasoline station
JP Borja	Cagayan de Oro	Construction of perimeter fence
San Juan Depot	San Juan, Batangas	Bundwall and Oil and Water Separator Installation
San Juan	San Juan, Batangas	In-Line Blending System
Various Sites	Mindanao Wide – 26 sites	UGT Cleaning



Maintenance works of Seaoil Retail Station



Installation of Transtank at Seaoil Malalag, Davao



Commitment, Passion, Making a Difference

www.cpmcgsi.com

50

January 2023 ISSUE

PROJECTS & ACCOMPLISHMENTS



UNIOIL PETROLEUM PHILIPPINES INC.



Project	Location	Work Description
Total Scope Maintenance	Luzon Wide	Preventive Maintenance of Unioil Stations Luzon Wide
Adhoc Projects	Bataan Depot	Implementation of approved adhoc works
NTI – Makati	Makati City	Construction of gasoline station
NTI – Meycauayan Bulacan	Meycauayan, Bulacan	Construction of gasoline station
NTI – E. Rodriguez	E. Rodriguez, QC	Construction of gasoline station
NTI – Las Piñas	Zapote, Las Piñas	Construction of gasoline station
NTI – Vito Cruz	Vito Cruz, Makati	Construction of gasoline station
Dismantling and Pull-Out of 4L & 800mL Filling Line	Shell Pandacan, Pandacan, Manila	Dismantling of Filling Lines from Shell Pandacan for installation in UNIOIL Valenzuela Plant
Installation of New Filling Lines and Relocation of Existing Filling Lines	UNIOIL Valenzuela Plant Rubbermaster Road, Brgy. Lingunan, Valenzuela	Civil, Mechanical and E&I
Mogas-Ethanol Line Modification	LMG Facility, Pinamucan, Batangas City	Civil and Mechanical Works
Rehabilitation of Asphalt Heater House	Bataan Depot	Civil
Facility Upgrade	LMG, Pinamucan, Batangas City	Civil



PHOENIX PETROLEUM PHILIPPINES

Project	Location	Work Description
Adhoc Works	Various sites Luzon Wide	Implementation of approved adhoc works
NTI – Putatan	Putatan, Muntinlupa	Construction of gasoline station
NTI – Dasmariñas	Dasmariñas, Cavite	Construction of gasoline station
NTI – Balagtas	Balagtas, Bulacan	Construction of gasoline station
NTI – Roosevelt	Roosevelt, QC	Construction of gasoline station
NTI – Molino	Bacoar, Cavite	Construction of gasoline station
NTI - Congressional	Congressional QC	Construction of gasoline station
NTI – Vito Cruz	Vito Cruz Makati	Construction of gasoline station (on-going)



Commitment, Passion, Making a Difference

www.cpmcgsi.com

PROJECTS & ACCOMPLISHMENTS



CALTEX

CALTEX PHILIPPINES INC



➤ *Refueling Stations Preventive Maintenance Works for :

- Metro
- North
- South Luzon

*under Johnson Controls Inc.



PETRON

PETRON CORPORATION

- Construction of Fuel-refilling Stations:
- Equipment Installation and Civil Works for Nineteen (19) Bulilit Stations
- Construction of New Stations at Yamamura Glass Plant Mandaue, Cebu
- Civil works for Five (5) Treats stations

Project	Location	Work Description
NTI - Muzon	Muzon San Juan Batangas	Construction of gasoline station
NTI - Namuco	Namuco Rosario Batangas	Construction of gasoline station
NTI - Magsaysay Lizares	Magsaysay Lizares	Construction of gasoline station
Amir Lim	Binondo, Manila	Replacement of tank UGT Steel
Various Sites	Various sites Luzon and Visayas Wide	Construction of Petron Bulilit Stations
Yamamura Glass Plant	Mandaue Cebu	New SS construction
Treats Kambal Pandesal	Various Sites	Construction of Treats

PETRON MANDAUE, CEBU



FRONT VIEW



SIDE VIEW



Commitment, Passion, Making a Difference

www.cpmcgsi.com

January 2023 ISSUE

PROJECTS & ACCOMPLISHMENTS

SUBCONTRACTING WITH PRESAM CONSTRUCTION AND GENERAL SERVICES, INC.



COMMERCIAL BUILDING PROJECTS
PSPC NEW ADMINISTRATION BUILDING,
Tabangao, Batangas City



Civil, Mechanical and E&I Works
TEMPORARY METERING PROJECT
SHELL PHILIPPINES EXPLORATION (SPEx)
TP3 Sta. Rita, Batangas City

Project	Location	Work Description
Shell Tabangao Refinery	Tabangao Batangas	Ambulong Fire Station
Shell Tabangao Refinery	Tabangao Batangas	Repair of House 43 & 44
Shell Buli	Sucat Parañaque	Construct additive tank
Shell Tabangao Refinery	Tabangao Batangas	Various minor projects
Shell Philippines Exploration B. V.	Sta. Rita Batangas	Temporary metering project (TP3)
Shell Philippines Exploration B. V.	Tabangao Batangas	Chemical storage shed mod (on-going)
Shell Philippines Exploration B.V.	Alabang Muntinlupa	Draftsman and senior document controller
PETS – Aseana One	Parañaque City	Construction of PETS testing area
JGC Philippines, Inc	Stepan Philippines, San Pascual Batangas	Amine oxide Peroxidation Process Project

Civil, Mechanical, Electrical And Instrument Works
STEPAN PHILIPPINES,
San Pascual Batangas



WORKS SUBCONTRACTING CIVIL, MECHANICAL, ELECTRICAL
TEMPORARY SITE FACILITY FOR STAR TREC PROJECT
Pilipinas Shell Petroleum Corporation
Tabangao, Batangas City



Commitment, Passion, Making a Difference
www.cpmcgsi.com

PROJECTS & ACCOMPLISHMENTS

SUBCONTRACTING WITH PRESAM CONSTRUCTION AND
GENERAL SERVICES, INC.



2018 PSPC Plant Turnaround Shutdown Planning



Project Execution Period: February – June 2018

Scope Performed:

- Detail Planning and preparation of work packs for all shutdown scopes including but not limited to Mechanical (static and rotating), line sectional replacement and E/I items.
- Progress monitoring and reporting of preparation activities prior to shutdown such as but not limited to material readiness, site scaffolding, pre-fabrication, tagging, manpower, specialist contractors and equipment, etc.
- Assist client in coordination, monitoring and progress reporting during shutdown period.
- Assist client Engineering shutdown team in consolidating handover documents per unit prior to PSSR and eventual start-up.
- Provide Look-back report to client within 2 weeks after successful plant start-up.



Commitment, Passion, Making a Difference

www.cpmcgsi.com

January 2023 ISSUE

PROJECTS & ACCOMPLISHMENTS

IMO STB HYSTAR PROJECT



SCOPE OF WORK:

Supply of all works, services, equipment and materials for the General Civil and SMP works for SHELL at PSPC, Batangas.



Commitment, Passion, Making a Difference

www.cpmcgsi.com

PROJECTS & ACCOMPLISHMENTS



IMO STB HYSTAR PROJECT



Commitment, Passion, Making a Difference
www.cpmcgsi.com

PROJECTS & ACCOMPLISHMENTS

IMO STB HYSTAR PROJECT



Commitment, Passion, Making a Difference

www.cpmcgsi.com

PROJECTS & ACCOMPLISHMENTS

IMO STB HYSTAR PROJECT



Commitment, Passion, Making a Difference

www.cpmcgsi.com

January 2023 ISSUE

PROJECTS & ACCOMPLISHMENTS

SHELL H2 & CO2 PLANT PROJECT



SCOPE of WORK :

- Construction of Control and Sub Station Buildings and other civil works including pedestal.
- Fabrication and Installation of Pipe Racks and Stanchions(approx61tons).
- BOP and CO2 piping fabrication and installation, including pipe supports and insulation.
- BOP/CO2/HMU collecting goods from barge using SPMT and delivering to ALPI plot, lifting, positioning, shimming, installation, grouting, piping, pipe support , insulation and assembly.



Commitment, Passion, Making a Difference

www.cpmcgsi.com

January 2023 ISSUE

PROJECTS & ACCOMPLISHMENTS

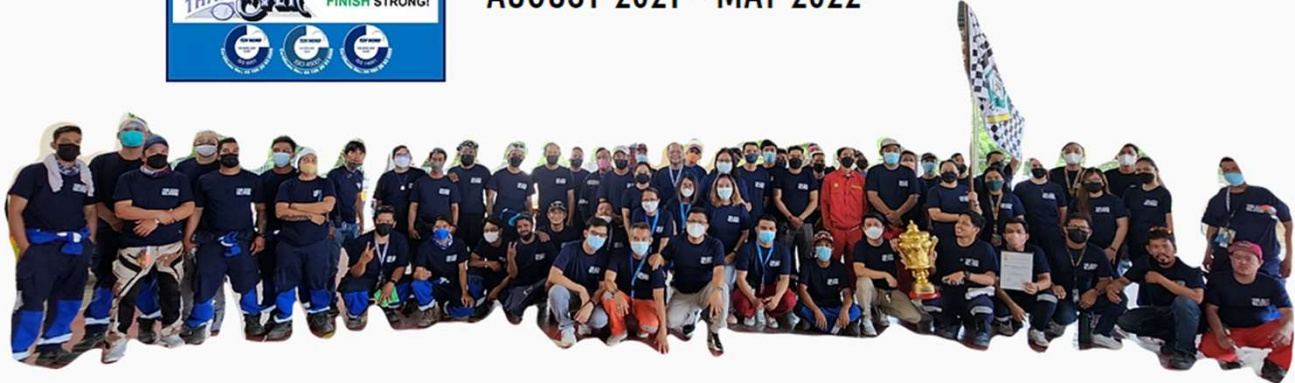


TDP-Early Selective Dismantling and Demolition of Onshore Structures

TDP - ESDD PROJECT COMPLETION CELEBRATION



TDP-ESDD PROJECT
AUGUST 2021 - MAY 2022



166 GOAL ZERO DAYS, LTI FREE MILESTONE
COMPLETED THE PROJECT AHEAD OF SCHEDULE



Commitment, Passion, Making a Difference

www.cpmcgsi.com

60

January 2023 ISSUE

PROJECTS & ACCOMPLISHMENTS



Renovation of Shell Import Facility Terminal NCR and Laboratory Buildings

LAB-NCR RENOVATION PROJECT COMPLETION CELEBRATION



May 27, 2022-LAB-NCR Renovation Project Completion Celebration

CPM Team safely and successfully completed the Laboratory and NCR renovation project with 151 Goal Zero Days LTI-Free milestone.



Commitment, Passion, Making a Difference

www.cpmcgsi.com

PROJECTS & ACCOMPLISHMENTS



Repair of Jetty 1 Platform

Successful completion last January 2023



ON-GOING & LIVE PROJECTS



- 3 years contract of condition monitoring and Rotating Equipment Specialist supply to PSPC SHIFT
- 3 years contract for the Instrumentation and Electrical Maintenance of PSPC SHIFT
- 3 years contract for the supply of high skilled Utilities operator 24/7 365 days a year
- Fire pump and Rotating Equipment of 5 Shell depot sites PH wide
- 2 + 1 years EMS-ITMS Contract (Engineering Maintenance Services-Integrated Tank Management System including Jetty Mitigation, Corrective Maintenance (CM) and Preventive Maintenance (PM)
- Jetty MLA (Marine Loading Arm) Drain Project (Structural, Mechanical, Piping, Demolition, E&I Scope)
- EPCC (Engineering, Procurement, Contracts, Commissioning) - 2 projects on-going
- Tabangao Demolition Project – Dismantling & Removal Bucket
- Tabangao Demolition Project – Demolition Bucket



- Platform Modification for EW-3499- Additional Carbon Canister for Thox
- Construction works for diesel station-truck refilling station



- CM and PM of Oilink depot in Bataan

GNPower Mariveles Coal Plant Ltd. Co.

- BnF and Painting contract of GMEC Marivelles Bataan (3 years contract)



Commitment, Passion, Making a Difference

www.cpmcgsi.com

January 2023 ISSUE



Main Office

54 Abarilla St. Concepcion Uno, Marikina City

Telephone Number: (02) 948-7017

Facsimile Number: (02)948-7017 telefax

cpmconstruction@cpmphil.com

South Luzon Base

San Isidro, Batangas City

Telephone Number: (043)-740-3329

lee.seno@cpmphil.com

(Business Development & Program Integration Manager)

ronnie.austria@cpmphil.com

(Special Projects Manager)

North Luzon Base

4688 Old Natinal Road, Bagong Silang

Alas-Asin, Mariveles,

North Luzon, Bataan 2105

roldan.seno@cpmphil.com

(Operations Manager for North Luzon)

2022



Commitment, Passion, Making a Difference

www.cpmcgsi.com

January 2023 ISSUE